

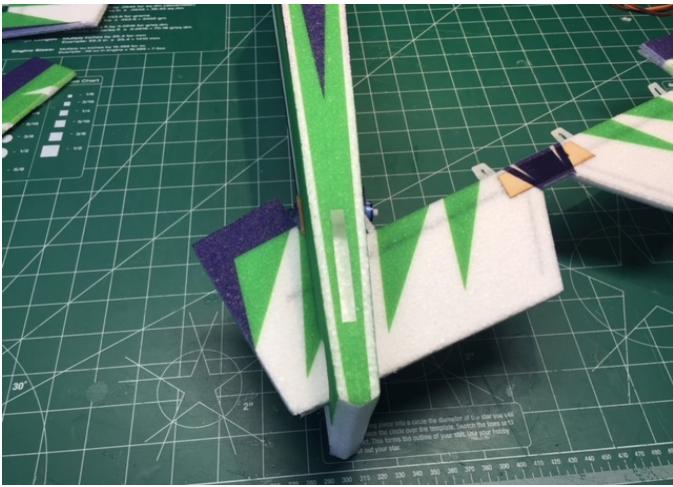


H-King Mx2 3D EPP 955mm ARF



Safety and Disclaimer: This is not a Hobby King Manual, it has been provided by a Loyal Customer for Your Use. This Model is not a Toy and is Intended for Intermediate or Advanced Builders and Pilots. Serious Injury or Death May result from Misuse of this model and or Your Battery. You are Solely Responsible for the Safe Assembly, Operation, and Storage of this Model and its Related Components.

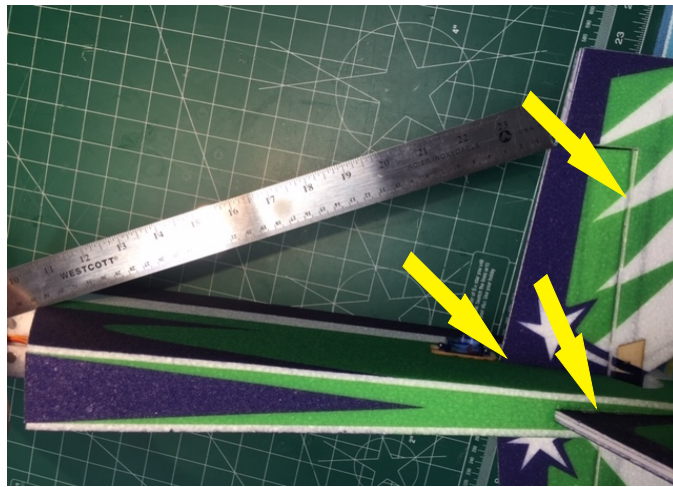
Packing List: Fuselage, Wing Panel, Ailerons, Stabilizer, Elevator, Rudder, Fin (Landing Gear Wheels and Hardware) Battery Cover, and Servo Linkages.



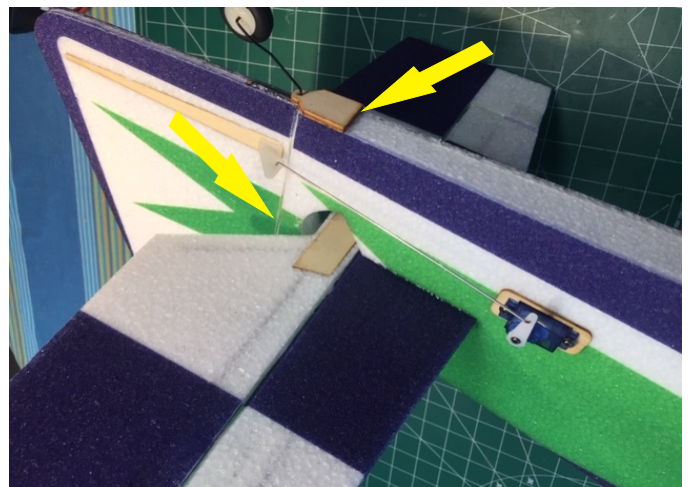
7 Slide elevator into Slot at back of Plane



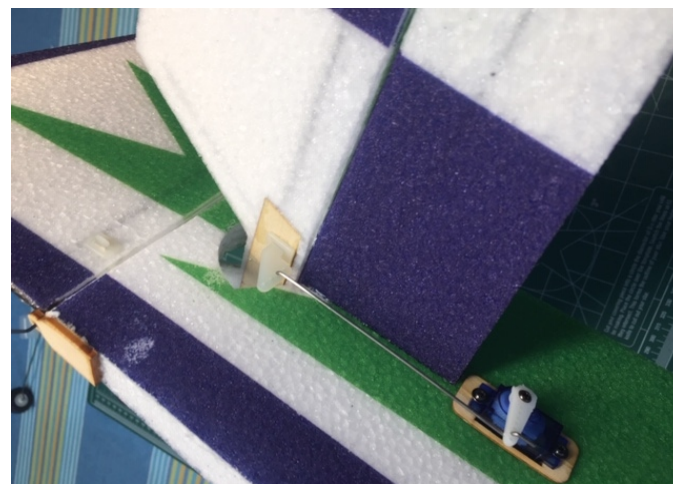
8 Slide Stab in, Insert Hinge Tabs of Elevator.



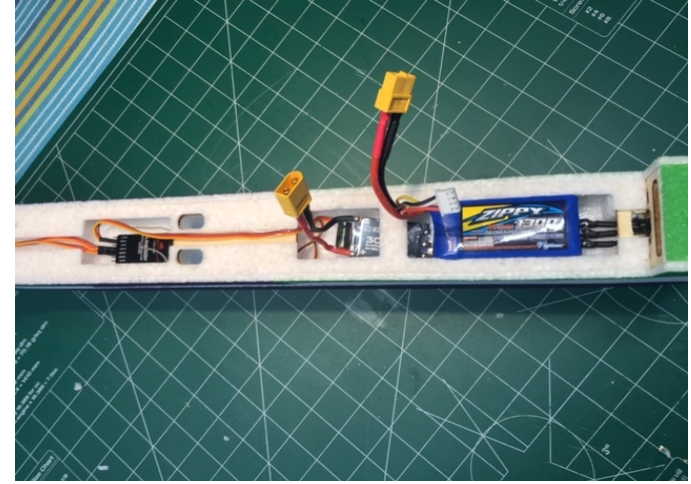
9 Ensure Stab is Straight and Center by measuring on both sides. Install Fin. Then Apply Medium CA to Stab, Fuselage, and Fin, as well as Elevator Hinges.



10 Install Rudder and Glue Hinges as well as the Plywood Support with Medium CA Install Control Horn and Linkage to Servo Center and Heat shrink



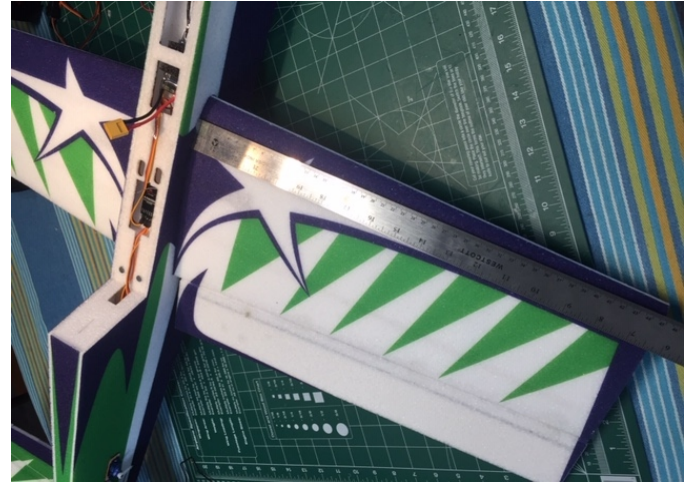
11 Install Control Horn on Elevator. Install Linkage to Servo



12 Install Receiver, Speed Control and fit Battery Temporarily



12 Install Servo and Aileron in one side of Wing only. Install Control Horn and Servo Linkage Medium CA Hinges



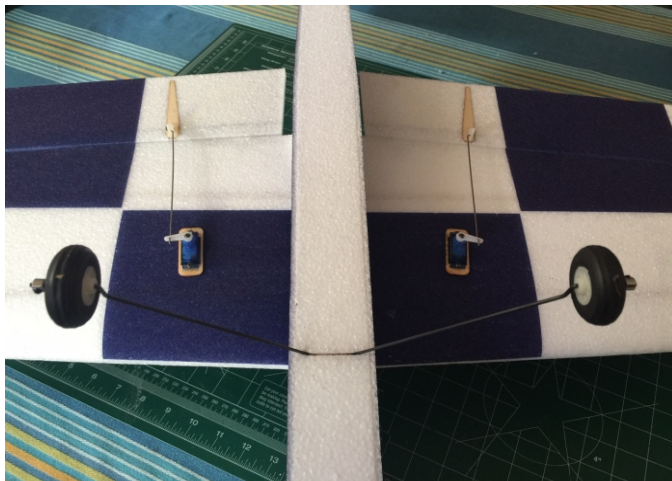
13 Slide Wing into Fuselage Slot. Center Wing Into Fuselage.



14 Ensure Wing is Perpendicular to Fuselage.



15 Install Servo, Aileron, Control Horn and Servo Linkage to other Wing as in Step 12 Medium CA Wing



16 Install Landing Gear with Supplied Plywood and Medium CA

Notes:

I have assembled the Plane in this order as it was easier to prepare the fuselage Prior to Installing the wing on the Fuselage.

I also Used a Servo Tester to Center the Servos for ease of Linkage installation later.

I used a Z-Bender for my Linkages instead of the Supplied Heat shrink.

Specifications:

Wingspan	955mm
Length	945mm
Wing Area	15.2dm ²
Servos	1.5-2Kg/cm X4
Motor	2834, 2215, 2217 950-1150 Kv
Propeller	1047 / 1147
Weight	550g no Battery
ESC	25-30A
C of G	85-92 mm from LE near Fuse
Battery	3S 11.1V 1000-1300Mah

Setups:

C of G	85-90mm
Elevator Throw	40-45°
Rudder Throw	45-45°
Aileron Throw	35-40°

Flying:

- Check with Your Local area on Rules and Regulations Regarding the use of unmanned aircraft.
- Do Not Fly in adverse weather conditions
- Do Not Fly near People or Animals
- Do Not Fly Near Aerodromes, Buildings or Vehicles
- You are Responsible for the Safe use of this Model, an Experienced Spotter is always a good idea.